

PRELIMINARY

PRELIMINARY

PRELIMINARY

| REVISIONS | | DATE |
|-----------|-------------|------|
| REV. NO. | DESCRIPTION | |
| | | |

INDEX OF SHEETS

- AB02 GENERAL NOTES & PAY QUANTITIES (BRIDGE B)
- B008 GENERAL PLAN AND ELEVATION
- B009-B010 FOUNDATION REPORT
- B011 SUBSTRUCTURE STAKING DIAGRAM
- B012 DETAILS OF PIPE UNDERDRAIN AND SUBSTRUCTURE EXCAVATION
- B013 DETAILS OF ABUTMENT 1
- B014 DETAILS OF ABUTMENT 2
- B015 DETAILS OF WINGS
- B016-B017 DETAILS OF PIERS
- B018-B023 DETAILS OF SUPERSTRUCTURE
- B024 DETAILS OF 35' TYPE II BEAM
- B025 DETAILS OF 60' TYPE II BEAM
- B026 DETAILS OF BEARING ASSEMBLY
- B027 DETAILS OF APPROACH SLAB
- B028 DETAILS OF DRAIN AT END OF BRIDGE

MATERIALS

- CLASS A CONCRETE, F'C = 3 KSI
- CLASS AA CONCRETE, F'C = 4 KSI
- REINFORCING STEEL, FY = 60 KSI
- STRUCTURAL STEEL M270 (GRADE 50W), FY = 50 KSI
- STAINLESS STEEL A420 (TYPE 316), FY = 30 KSI

LOADING

- HL-93 OR OKLAHOMA OVERLOAD TRUCK
- 20 PSF FUTURE WEARING SURFACE
- 5 PSF STAY-IN-PLACE FORMS

DESIGN

- AASHTO LRFD BRIDGE DESIGN SPECIFICATIONS, 7TH EDITION WITH 2016 INTERIMS.
- ANSI/AASHTO/AWS D1.5 BRIDGE WELDING CODE
- ANSI/AWS D1.6 STRUCTURAL WELDING CODE - STAINLESS STEEL

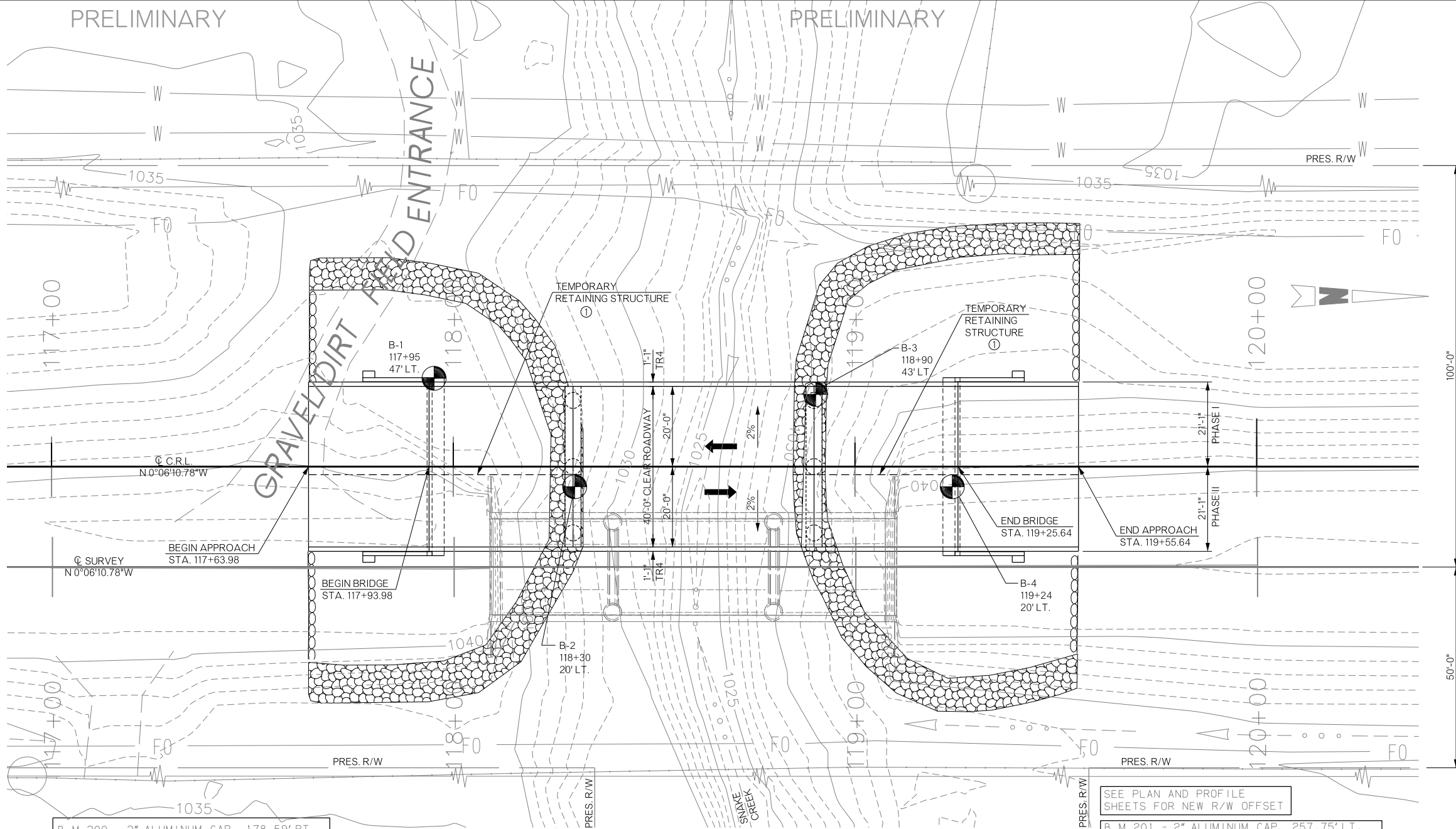
LFD OPERATING RATING

HS-38.8

HYDRAULIC SUMMARY

TOTAL DRAINAGE AREA = 17.39 MI²
 CONTROLLED DA = 0 MI²
 EFFECTIVE DA = 17.39 MI²

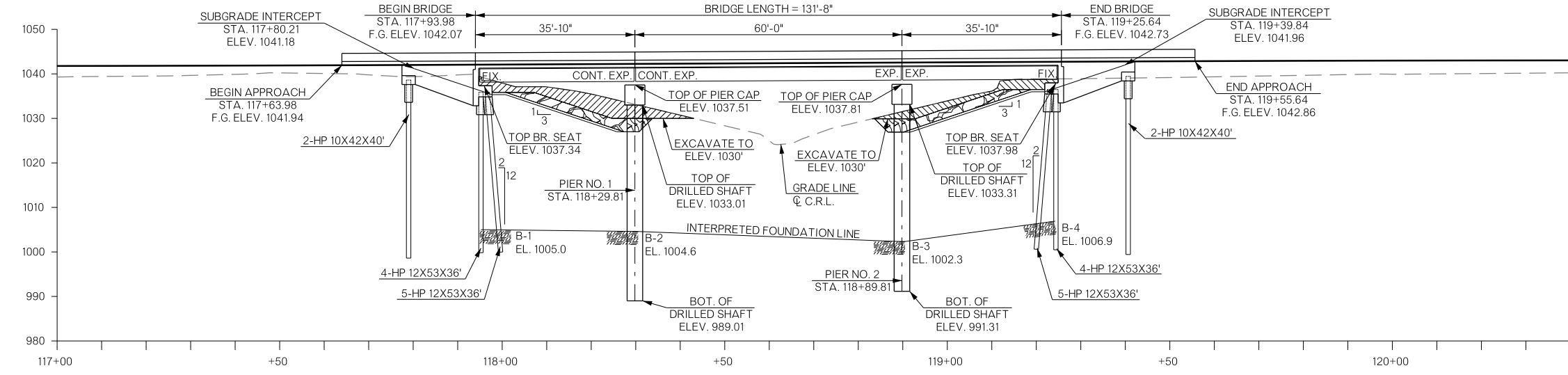
| | |
|----------------------------------------------------------------------------------------------|---------------------------------------------------------------------------------------------------|
| Q ₂ = 895 CFS V ₂ = 5.95 FPS CHW ₂ = 1,032.08 FT | Q ₅₀ = 5,730 CFS V ₅₀ = 9.48 FPS CHW ₅₀ = 1,038.22 FT |
| Q ₅ = 1,949 CFS V ₅ = 5.82 FPS CHW ₅ = 1,034.45 FT | Q ₁₀₀ = 7,252 CFS V ₁₀₀ = 11.93 FPS CHW ₁₀₀ = 1,039.38 FT |
| Q ₁₀ = 2,883 CFS V ₁₀ = 6.21 FPS CHW ₁₀ = 1,035.98 FT | Q ₅₀₀ = 11,615 CFS V ₅₀₀ = 16.14 FPS CHW ₅₀₀ = 1,043.38 FT |
| Q ₂₅ = 4,337 CFS V ₂₅ = 7.24 FPS CHW ₂₅ = 1,037.62 FT | Q _{OT} ≈ Q ₂₂₇ |



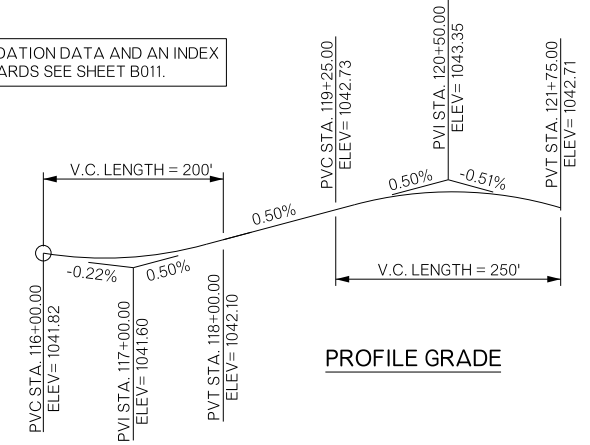
PLAN THE EXTENT AND LOCATION OF TEMPORARY RETAINING STRUCTURES ARE APPROXIMATE. FIELD ADJUST AS NECESSARY.

SEE PLAN AND PROFILE SHEETS FOR NEW R/W OFFSET
 B.M.201 - 2" ALUMINUM CAP. 257.75' LT. STA. 123+37.43 ELEV. 1035.97

FOR FOUNDATION DATA AND AN INDEX OF STANDARDS SEE SHEET B011.



ELEVATION



PROFILE GRADE

| | | | | |
|------------------------------------------------------------------------------------------------------------------------|------------------------------|---------------|--------------|-----------|
| BRIDGE "B" U.S.-277 over SNAKE CREEK | COMANCHE COUNTY | Design | MLC | 07/16 |
| GENERAL PLAN AND ELEVATION 35'-60'-35' TYPE II P.C. BEAM 40'-0" CLR. RDY. W/TR4 RAILS C.C.R.L. STA. 118+59.81 | | Detail | VNT | 07/16 |
| | | Check | DAH | 04/17 |
| | | Squad | HARJO | |
| | | Engr. | MOLLA-ESMAIL | |
| STATE OF OKLAHOMA | DEPARTMENT OF TRANSPORTATION | JOB/PIECE NO. | 27968(04) | SHEET NO. |
| | | | | B008 |

PRELIMINARY

PRELIMINARY

PRELIMINARY

PRELIMINARY